

# HAY & FORAGE

## 2026 EARLY ORDER CATALOGUE



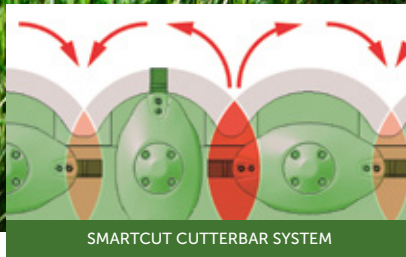
# MOWERS



**1.9%**  
P.A.

**FINANCE\***  
FOR 36 MONTHS

ACROSS THE KRONE  
HAY TOOLS RANGE



SMARTCUT CUTTERBAR SYSTEM



CV TINE CONDITIONER

## EC TRAILED MOWERS

Trailed mowers from 2.8m to 5.0m.

ECTC & ECTS (Trailed Centre & Side) mower range available in new M-Roll steel conditioner and V-Flail conditioner.

ECTS360 CRSM and ECTS360CV available with a wide working width of 3.6m.

## ECB & ECF MOWER RANGE

Triple Combination Mowers from 8.7m-10.1m.

Large range of ECB and ECF mowers with new M-Roll steel super conditioner / V-tine / no conditioner and with or without cross conveyor for ECB mowers.

High output rates and heavy construction for massively efficient mowing.

Working widths up to 4.00m and minimum Transport widths 3.00m with Fold 4.00m Mowers

## SMARTCUT CUTTERBAR

Krone's SmartCut cutterbar features lifetime oil filling.

Krone's fully welded one-piece construction gives exceptional resilience.

Satellite gears are a Krone development, featuring massive spur gears to ensure positive mesh, slow speed and efficient power transmission across every disc.

Increased overlap between discs ensures a clean cut and smooth crop flow.

## SAFECUT SHEAR PIN

Disc impact protection system standard across all Krone mowers.

When the disc hits an obstacle, the roll pin breaks and the disc spins up on the threaded drive shaft, moving out of the way of the next disc, which continues to spin without damage.



ECF400 FOLD

\*This finance offer from Kubota New Zealand Limited is only available to eligible business applicants on loans with a term of up to 36 months with monthly repayments, minimum financed amount of \$4,000. The 1.9% p.a. interest rate is fixed for the term of the loan and is only available with a minimum 20% deposit and applies to the Krone Hay Tools Range excluding Big Line. Credit criteria, fees, terms and conditions apply. The finance offer is valid to 28/02/2026.

“ Krone’s commitment to innovation is evident in the quality and performance of their equipment. We appreciate how they continuously provide farmers like us with cutting-edge solutions that improve our productivity and profitability ”

CRAIG HAGE - REGARI CONTRACTING



## ECTC CONNECT

ECTC Connect allows you to connect 2x ECTC400/500 trailed mowers to the rear, in combination with an ECF360 front mower, allowing up to 13m cut width.

Mowers can be operated simultaneously, or individually from the cab via an electrical box.

## EASYCUT TRAILED CENTRE 4M & 5M

Widest conditioner rollers in the industry.

ECTC 400 & 500 CRSM mowers with steel M-Roll design exclusive to Krone.

2 Conditioning Types - M Steel Roll & the V-Flail conditioner system.

Transport kit available.

## AMR & ECR LINKAGE MOWERS

Entry level AM R range with Working widths from 2.40m - 3.20m. Features include driven by shaft drive (no belts), quick change blades and heavy-duty headstock.

Premium level ECR range with working widths from 3.20m - 4.50m - NoN Conditioner.

ECR Premium Conditioner Models with a working width of 2.80m CV or 3.20m and a choice of M-Roll or CV-Flail.

ECR DuoGrip centre of gravity suspension system which suspends the mower in its centre of gravity, maintaining uniform ground pressure across the entire working width.



ECTC500CV UNDER TOW

# TEDDERS



**1.9%**  
P.A.  
**FINANCE\***  
FOR 36 MONTHS

**ACROSS THE KRONE  
HAY TOOLS RANGE**

\*This finance offer from Kubota New Zealand Limited is only available to eligible business applicants on loans with a term of up to 36 months with monthly repayments, minimum financed amount of \$4,000. The 1.9% p.a. interest rate is fixed for the term of the loan and is only available with a minimum 20% deposit and applies to the Krone Hay Tools Range excluding Big Line. Credit criteria, fees, terms and conditions apply. The finance offer is valid to 28/02/2026.

## VENDRO & KWT TEDDERS

Introducing the NEW Vendro C1340 - (pictured) Chassis design replacing the reliable KWT1300.

'Vendro' linkage tedder range available from 4.6m to 11.2m.

Features include Krone OptiTurn rotors with new OptiTurn curved tine for optimum throw of crop, ensuring clean high-quality forage.

Trailing tedders working widths from 9m to 20m.

Features which include the heaviest square tube frame on the market, with the gearbox installed under the frame to maintain strength in the frame and remove any stress.

KWT Trailed Tedders with working widths of 15m - 19.6m (KWT1600 & 2000); not all models will include the new Vendro updates.

Krone's OctoLink clutches are always in mesh for full power and do not require greasing.



OCTOLINK

# RAKES



**1.9%**  
P.A.  
**FINANCE\***  
FOR 36 MONTHS

**ACROSS THE KRONE  
HAY TOOLS RANGE**

\*This finance offer from Kubota New Zealand Limited is only available to eligible business applicants on loans with a term of up to 36 months with monthly repayments, minimum financed amount of \$4,000. The 1.9% p.a. interest rate is fixed for the term of the loan and is only available with a minimum 20% deposit and applies to the Krone Hay Tools Range excluding Big Line. Credit criteria, fees, terms and conditions apply. The finance offer is valid to 28/02/2026.

## SWADRO RAKES

Swadro Rakes come in Single, Double or Quad Rotor ranging in size from 3.5m - 19.0m working widths.

All heavy duty with proven reliability.

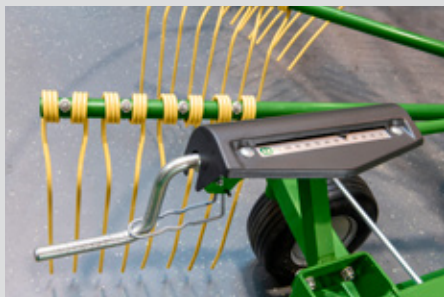
Exceptionally strong frame for high stability and durability, setting the benchmark for four rotor raking.

The TC / TS Multi Rotor Range with working widths up to 19m in centre or side delivery.

Fully enclosed gearbox with dry cam track design - no oil leaks.

Your choice of height adjustment – mechanical or fully electric from the cab.

Six rotor with 19m working width.



## KRONE'S LIFT TINE

Lifts the crop off the ground towards the centre of the tine for improved fodder quality and less drag.

Higher forward speeds.



## DURAMAX DRY CAM TRACK

Steep angle is the key for a precise windrow shape.

Maintenance-free steep dry cam track design made from bainite hardened cast steel with spherical graphite.

3-year warranty on dry cam track.



DURAMAX CAM TRACK



SWADRO TS640T

# ROUND BALERS

FORTIMA & COMPRIMA



**1.9%**  
P.A.  
**FINANCE\***  
FOR 36 MONTHS

ACROSS THE KRONE  
HAY TOOLS RANGE

\*This finance offer from Kubota New Zealand Limited is only available to eligible business applicants on loans with a term of up to 36 months with monthly repayments, minimum financed amount of \$4,000. The 1.9% p.a. interest rate is fixed for the term of the loan and is only available with a minimum 20% deposit and applies to the Krone Hay Tools Range excluding Big Line. Credit criteria, fees, terms and conditions apply. The finance offer is valid to 28/02/2026.

## FORTIMA ROUND BALERS

Fortima round baler from KRONE – The ideal machine for individual use. The Fortima range lines up four models: Two models with a fixed bale chamber and two models with a variable bale chamber. All of them have the endless chain-and-slat elevator.

- + 2.05 m camless EasyFlow pick-up
- + Feeding or cutting rotor
- + Proven chain-and-slat elevator with meshing effect
- + Low power input
- + Simple, low-maintenance design

### THE RANGE:

#### FORTIMA V1500MC-2

Variable chamber models m Ø1.00 - 1.50

MultiCut rotor 17

#### FORTIMA 1250-2

Fixed chamber models for 1.25 m (4'1")

Rotor intake

#### FORTIMA 1250MC-2

Fixed chamber models for 1.25 m (4'1")

MultiCut rotor 17

## COMPRIMA ROUND BALERS

The Comprima from KRONE features a unique baling technology. The NovoGrip chain and slat conveyor bales all types of crops. In combination with an extremely powerful intake system, the machine produces high-density bales at high throughputs.

#### COMPRIMA V180XC-2

- + 2.15 m camless EasyFlow pick-up
- + Variable chamber models m Ø 1.00 - 1.80
- + XCut cutting rotor 17 blades
- + Single or Tandem axle



# WRAPPERS

## BALER WRAPPER COMBINATION



**1.9%** P.A.  
**FINANCE\***  
FOR 36 MONTHS

**ACROSS THE KRONE  
HAY TOOLS RANGE**

\*This finance offer from Kubota New Zealand Limited is only available to eligible business applicants on loans with a term of up to 36 months with monthly repayments, minimum financed amount of \$4,000. The 1.9% p.a. interest rate is fixed for the term of the loan and is only available with a minimum 20% deposit and applies to the Krone Hay Tools Range excluding Big Line. Credit criteria, fees, terms and conditions apply. The finance offer is valid to 28/02/2026.

### COMPRIMA CV 150 XC PLUS VARIABLE COMBINATION

Uncompromised stability is the key landmark feature of KRONE Comprima CV Plus. These machines are designed to successfully combat the most extreme conditions in non-stop operation. Bale diameters are steplessly set from 1 m to 1.5 m and the pressure is changed electrically from the cab for convenient adjustment to different crops and conditions.

The Comprima CV 150 XC Plus baler wrapper has a powerful double wrapper orbiting at up to 36 rpm.

#### PLUS VERSION:

- + W-pattern tine arrangement EasyFlow pickup
- + Standard Auto Lube system
- + Bale density from the tractor cab
- + Wider Novogrip belts (115mm vs 90mm)
- + Heavier drive chain from 1 1/4" to 1 1/2"
- + Faster Elevator Speed
- + Pivoting pickup wheels
- + Increased frame build



### EASYWRAP 150 - MOUNTED BALE WRAPPER

The KRONE EasyWrap 150 is mounted in the three-point linkage, front and rear. Beyond that, it also attaches to wheeled loaders and telescopic materials handlers for maximum productivity and machine utilisation.

- + Bale diameter (m) 1.00 - 1.50
- + Max. bale weight (kg) 1600
- + Max. wrapping speed (rpm) 36
- + The fastest single-arm wrapper in the market for maximum productivity and silage quality
- + Automated functions for convenient bale control – from collecting to unloading
- + DS 500 Standard control box

### EASYWRAP 165 T - TRAILED BALE WRAPPER

The KRONE EasyWrap 165 T is a truly high-capacity machine where a double arm orbits around the bale for wrapping. The machine lifts up to 1,650kg bales and wraps them at speeds of up to 40rpm achieving maximum efficiency and daily productivity.

- + Link arms, trailed
- + Max. wrapping speed (rpm) 40
- + Bale diameter (m) 1.00 - 1.65
- + Max. film roll holders 8
- + Max. bale weight (kg) 1650
- + ISOBUS tractor terminal for straightforward operation or CCI

# ROUND BALERS

## VARIPACK RANGE



**1.9%**  
P.A.

**FINANCE\***

FOR 36 MONTHS

ACROSS THE KRONE  
HAY TOOLS RANGE

\*This finance offer from Kubota New Zealand Limited is only available to eligible business applicants on loans with a term of up to 36 months with monthly repayments, minimum financed amount of \$4,000. The 1.9% p.a. interest rate is fixed for the term of the loan and is only available with a minimum 20% deposit and applies to the Krone Hay Tools Range excluding Big Line. Credit criteria, fees, terms and conditions apply. The finance offer is valid to 28/02/2026.

### VARIPACK V165-V190 V165 XC-V190 XC

KRONE VariPack is a belt baler that was specifically designed for baling all types of crops.

The design focuses on simple technology, high throughputs and high baling densities.

- + 2.15 m camless Pick-Up "EasyFlow" 4 tines bars - narrowly spaced at 55 mm
- + 176mm crop feed roller and fixed pick-up guide wheels
- + KRONE Integral rotor 530 mm rotor and Drop-Floor
- + 17-blades cutting system / selected manually in groups of 0/8/9/17
- + 3 endless belts with cleaning rollers – second drive optional
- + Baling pressure and the soft core are set on the ISOBUS terminal

**PRO**

### VARIPACK V165 PRO-V190 PRO V165 XC PRO-V190 XC PRO

- + 2.15 m camless Pick-Up "EasyFlow" 5 tines bars - narrowly spaced at 55 mm
- + 250mm crop feed roller and pivoting pick-up guide wheels
- + KRONE Integral rotor 530 mm rotor and Drop-Floor
- + 26-blades cutting system / selected from cab in groups of 0/ 13/ 13/ 26
- + Fast baling at a circumferential belts speed of 130 m/min
- + 3 endless belts actively cleaned and double drive
- + Baling pressure and the soft core are set on the ISOBUS terminal



# TRANSPORT

## FORAGE WAGONS AND TRAILERS

### KRONE GX UNIVERSAL TRAILER – JACK-OF-ALL-TRADES FOR ANY TYPE OF AGRICULTURAL CARGO

GX stands for general-purpose wagon, the most recent addition to the Krone forage wagon range. This wagon offers a new level of versatility and gentle and fast unloading of a wide variety of cargo. The new machine is available in two sizes – 44 m<sup>3</sup> and 52 m<sup>3</sup> – with two optional discharge rollers. The GX 440 rides on tandem axles and the GX 520 on a tridem unit, with both models featuring standard Isobus operation.

**KRONE**



\*This finance offer from Kubota New Zealand Limited is only available to eligible business applicants on loans with a term of up to 36 months with monthly repayments, minimum financed amount of \$4,000. The 1.9% p.a. interest rate is fixed for the term of the loan and is only available with a minimum 20% deposit and applies to the Krone Hay Tools Range excluding Big Line. Credit criteria, fees, terms and conditions apply. The finance offer is valid to 28/02/2026.

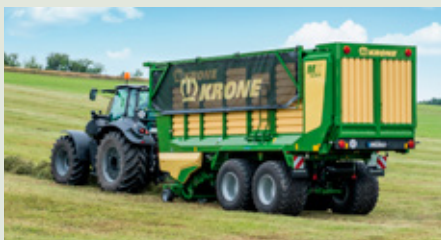
**1.9%**  
P.A.  
**FINANCE\***  
FOR 36 MONTHS

**ACROSS THE KRONE  
HAY TOOLS RANGE**



### KRONE TX FORAGER-FILLED FORAGE WAGONS

KRONE TX is the perfect silage trailer to serve the forage harvester, offering huge capacities, safe and swift travel as well as fast unloading. A TX boosts your productivity, reduces costs and sets new standards. Up to 56 m<sup>3</sup> (DIN 11741) capacity with single-frame concept for a lower dead weight and higher payload and extremely powerful roller chain drive for the chain-and-slat floor.



### KRONE MX SELF-LOADING AND FORAGER-FILLED FORAGE WAGON

MX defines our range of high-capacity forage wagons that offer capacities from 33 m<sup>3</sup> to 40 m<sup>3</sup>. Genuine dual-purpose forage wagons, they run in both the grass harvest chain as self-loading machines with discharge rollers and in the maize transport chain as forager-filled silage trailers. These machines score on versatility, reliability, efficiency and flexibility.



### KRONE RX SELF-LOADING AND HARVESTER-FILLED FORAGE WAGON

RX is KRONE's latest generation of forage wagons. Offering capacities between 36 and 43 m<sup>3</sup> (DIN 11741), these wagons are not only self-loading but can control the unloading rate and serve as silage trailers in support of the forage harvester. This versatility is paired with an outstanding reliability and efficiency, making the RX a particularly productive machine.



### KRONE ZX SELF-LOADING AND FORAGER-FILLED FORAGE WAGONS

The world's most powerful self-loading and harvester-filled forage wagon – thanks to the KRONE Powerbelt driveline with a transmission capacity of up to 400hp. Featuring the new OptiGrass cutting system and maximum throughputs, the RX and ZX forage wagons from KRONE set new benchmarks for professional forage trailers.

# SQUARE BALERS

BIG PACK HDP II 1290 GEN 6

Equipped with eight revolutionary and snippet-free -KRONE V-knotters, this is a professional machine offering maximum bale density, unmatched power and uncompromised efficiency even in the most difficult operating conditions. The BiG Pack HDP II 1290 (VC) sets new standards producing an extremely high number of bales and exceptional bale density in the shortest amount of time. Sturdy and designed for a long service life, it tackles the harshest conditions with ease, every day and in every season. This machine is the perfect solution for anyone looking for uncompromised power.



**3.99%** P.A.  
**FINANCE\***  
FOR 60 MONTHS

**ACROSS THE KRONE  
BIG LINE RANGE**

\*This finance offer from Kubota New Zealand Limited is only available to eligible business applicants on loans with a term of up to 60 months with monthly repayments, minimum financed amount of \$4,000. no repayments for the first 6 months then monthly repayments. The 3.99% p.a. interest rate is fixed for the term of the loan and is only available with a minimum 20% deposit and applies to the Krone BIG Tools Range. Credit criteria, fees, terms and conditions apply. The finance offer is valid to 28/02/2026.

## THE NEW GENERATION OF LARGE SQUARE BALER

Maximum throughput at highest baling density – the most powerful machine of the range

Powerful starter aid simplifying machine start-up even further

Proven Active pick-up for the highest throughput and minimal wear – now includes hydraulically adjustable crop press roller unit

Variable Filling System (VFS) – electronically adjustable from the cabin, ensuring thorough mixing and even channel filling

KRONE PowerClean system uses positive pressure to keep the knotter table clean – impurities never develop in the first place



### 1. ACTIVE PICK UP

Enormous throughput of up to 85 tonnes per hour

Greater throughput on account of 30% higher speed of rotation

235cm pick-up performance with 5 rows of tines

Open design at the rear for easy access

Flexible plastic scrapers for a longer lifetime

Mechanically driven feed roller with replaceable wear plates



### 2. VFS

Electronically controlled and monitored system

3 packer bars and 1 feeding bar

Trigger sensitivity can be adjusted to different windrow sizes via the terminal

Cam clutch protected

Multi-piece drum discs and main shaft for easy maintenance and repair

More robust components for increased lifetime



### 3. DRIVELINE

Hydraulically supported start-up with final rotational speed of up to 400 rpm

Large flywheel - weighing over 600 kg

1180 rpm

New Liebherr gearbox

Gearboxes and driveshafts driven

No shear bolts in the drive train for maximum operator comfort



### 4. PLATFORM

New 360 degree platform

Increase accessibility

Lowerable twine boxes for good accessibility and easy filling

Virtually dust-tight cover can be opened without tools

24 horizontal thread spools per side

77,760 metres of twine

1400+ bales per load of twine supply



### 5. BALE CHAMBER

Baling density of up to 235 kg/m<sup>3</sup>

Density increased by up to 5%

Reduced wear and replaceable plates

New bale ejector

Dust-tight drawer under the bale channel for standard tool box and water tank

Bale chute operated via the operating terminal

# SQUARE BALERS

BIG PACK GEN 5

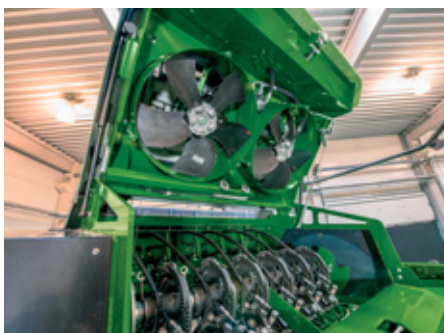


**3.99%**  
P.A.  
**FINANCE\***  
FOR 60 MONTHS

**ACROSS THE KRONE  
BIG LINE RANGE**

\*This finance offer from Kubota New Zealand Limited is only available to eligible business applicants on loans with a term of up to 60 months with monthly repayments, minimum financed amount of \$4,000. no repayments for the first 6 months then monthly repayments. The 3.99% p.a. interest rate is fixed for the term of the loan and is only available with a minimum 20% deposit and applies to the Krone BIG Tools Range. Credit criteria, fees, terms and conditions apply. The finance offer is valid to 28/02/2026.

Even after more than 25 years of big baler production in Spelle, there is no sign of any let-up in the sheer innovative strength of the KRONE engineering team, as is evident from the new series of BiG Pack balers. Over several years of intensive development, they have come up with a completely new generation of BiG Pack balers which incorporate many well-known technologies and, above all, offer a significant increase in comfort. Almost all the existing features have been upgraded and adapted to user requirements.



## 1 KNOTTER FAN SYSTEM WITH V KNOTTER

PowerClean knotter fan system with positive pressure, for the cleanest machine up the top and down the sides of the machine.

Close to 100% clean machine as the air stream is running to all key areas of the baler.



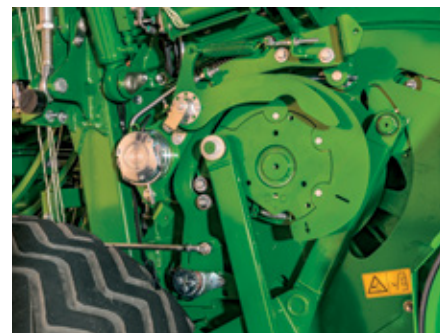
## 2 TWINE BOX

The twine box folds down in two modes hydraulically.

First mode: Complete door folds down, same as the HDP II design.

Second mode: The twine box stays on the machine and folds upright hydraulically.

Twine box door is integrated into the twine box for no accumulation of debris up the top and inside the twine box. Use a 10kg or newly developed 15kg twine spool for longer working days.



## 3 VFS - VARIABLE FILL SYSTEM

Larger HDP II VFS bearings and cam track.

Split inner cam track, easier to change.

Design goal was the reduction of running costs.

Redesigned VFS clutch triggering system, which allows the operator to adjust the biscuit from the cabin.

The most gentle pre-packer system which allows you to bale longer with the best top to bottom bale filling.

# SQUARE BALERS

BIG PACK 1290 HDP II GEN 4

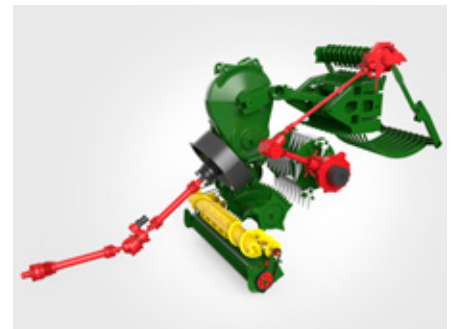
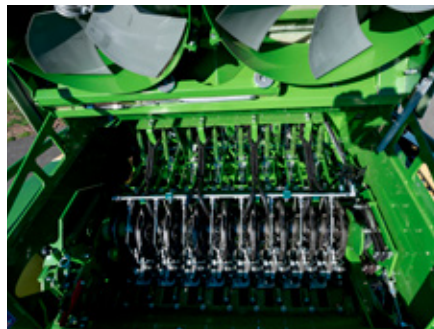
KRONE

**3.99%**  
P.A.  
**FINANCE\***  
FOR 60 MONTHS

ACROSS THE KRONE  
BIG LINE RANGE

\*This finance offer from Kubota New Zealand Limited is only available to eligible business applicants on loans with a term of up to 60 months with monthly repayments, minimum financed amount of \$4,000. no repayments for the first 6 months then monthly repayments. The 3.99% p.a. interest rate is fixed for the term of the loan and is only available with a minimum 20% deposit and applies to the Krone BIG Tools Range. Credit criteria, fees, terms and conditions apply. The finance offer is valid to 28/02/2026.

Up to 70% higher throughput or up to 10% higher bale density than the BiG Pack 1290 HDP HighSpeed – these were the ambitious targets the KRONE engineers set themselves in designing the new BiG Pack HDP II. Many interesting features increase the efficiency of this baler and operator comfort.



## 1 BIG AND POWERFUL

Krone has set a new benchmark in large square bale production with the HDP II, with a world first: the development of a unique 8 string V Knotted system.

The Krone HDP II can produce up to 90% higher throughputs or up to 10% more density at the same ground speed than our original HDP.

The Variable Fill System (VFS), unique to Krone, offers the highest throughput, 5-phase feed sequence for the bale chamber, offering rock-solid and well-formed bales, even in small windrows.

## 2 EIGHT DOUBLE KNOTTERS

Eight double knotters (KRONE V-knotters) for maximum baling densities without any snippets. The twine boxes lower hydraulically for easy maintenance and refilling.

54 balls of twine on board: 27 balls of twine – plenty for long working days. The twine boxes can be folded down hydraulically and conveniently from the cab for easy refilling and access to service points. Fitted with LED lights for greater convenience during night-time work.

## 3 DIRECT DRIVE

The separate driveline.

The pick-up on the packer machines is powered directly via the main gearbox and drive shaft which has an integrated cam clutch to protect the pick-up from overload.

BiG Pack HDP II models are equipped with a hydraulic start assist system.

# HIGH-CAPACITY MOWER CONDITIONER

SELF PROPELLED



## BIG M 450

Powerful and fuel-efficient LIEBHERR engine with 449 HP

Available with the steel rollers M-Rolls super conditioner or CV V-shaped steel tines for perfect conditioning to suit wide range of application.

Comes standard with cross conveyor auger system with hydraulic hoods that are controlled from the cab.

Big M's standard with swath hoods and swath boards.

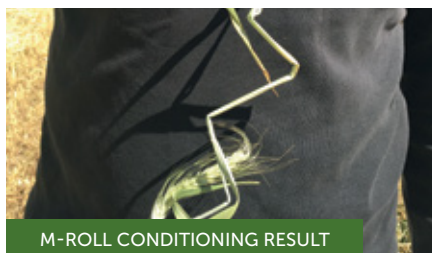
Other standard features include: hydraulic cut height, hydraulic floatation setup, GPS ready, front and rear suspension and active steering.

Self-propelled mower with up to 11.7m working width for CR model and 9.95m for CV-Flail model.

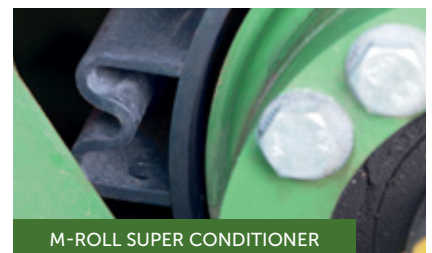
Transport at 3.6m for CR model and 3.0m for CV at 40km/h.



BIG M 450



M-ROLL CONDITIONING RESULT



M-ROLL SUPER CONDITIONER

# FORAGE HARVESTERS



**3.99%** P.A.  
**FINANCE\***  
 FOR 60 MONTHS

**ACROSS THE KRONE  
 BIG LINE RANGE**

\*This finance offer from Kubota New Zealand Limited is only available to eligible business applicants on loans with a term of up to 60 months with monthly repayments, minimum financed amount of \$4,000, no repayments for the first 6 months then monthly repayments. The 3.99% p.a. interest rate is fixed for the term of the loan and is only available with a minimum 20% deposit and applies to the Krone BIG Tools Range. Credit criteria, fees, terms and conditions apply. The finance offer is valid to 28/02/2026.

## BIG X HARVESTERS

BiG X 630 the compact precision forage harvesters

BiG X 680 - 780 - 1180 XXL forage harvesters.

6 intake rollers for maximum reliability and best chop quality.

MaxFlow chopping drums with 20, 28, 36 blades, biogas chopping drum with 40 and 48 blades 6 feed roller in LOC housing.

OptiMaxx roller conditioners with up to 305 mm diameter, 710 mm width.

KRONE VariQuick: Quick changeover for working with and without corn conditioner.

KRONE VariStream: Continuous crop flow ensured by spring-loaded floors for chopping drum and discharge accelerator.

Great manoeuvrability from independent wheel suspension for extreme manoeuvrability



BiG X 1180 WITH LIFT CAB



OPTIMAXX CORN PROCESSOR WITH IMPROVED SPRING PRESSURE AND UP TO 305MM ROLLER DIAMETER

### NEW FEATURES:

- + AUTOSCAN
- + CONSTANTPOWER & XTRAPOWER
- + EASYLOAD
- + ROCKPROTECT
- + STEER WITH A JOYSTICK
- + CROPCONTROL

# KRONE SERVICE

AND PARTS



## SILAGE FILM

KRONE excellent Silage Film has been specially developed for KRONE combination balers and wrappers is made up of a 5-layer blown film for maximum mechanical strength, reliability and ease of use.

It has exceptional wrapping qualities and is extremely tear and puncture resistant. For total peace of mind insist on KRONE Silage Film.

## FEATURES

High UV-stability

Superior reliability and easy use

Excellent tack characteristics in all temperatures

Exceptional wrapping qualities, extremely tear and puncture resistant

Easy pre-stretching of the film up to 70 % guaranteed, resulting in more bales per roll

5-layer blown film for maximum mechanical strength

Guaranteed protection from weathering for at least one year, no loss of forage quality when stored outdoors

Specially developed for KRONE combination balers and wrappers and therefore optimised to the system

  
**SILAGE  
FILM**



  
**KRONE EXCELLENT  
 TWINE**

**KRONE EXCELLENT TWINE HAVE BEEN DEVELOPED SPECIFICALLY TO MEET THE TECHNICAL REQUIREMENTS OF ALL THE KRONE BIG PACK BALERS.**

**TWINE**

The KRONE baler twine range caters for all applications from light horticultural right up the most extreme highest density situations. For total peace of mind insist on KRONE Twine.

Superior knot strengths of up to 340 kgf

High tear resistance

Longer runnage

Tighter knots thanks to optimum fibrilling

Non-toxic & environmentally friendly.

High resistance to UV weather exposure

Optimum performance and easy to use

Specially developed for KRONE square balers

We have the custom made product for you KRONE Big Pack



**NETWRAP**

KRONE excellent Netwrap has been specially developed for KRONE round balers with optimum bale coverage and edge to edge technology. All KRONE excellent net wraps use weft threads with ample reserve length.

The KRONE excellent Edge X-tra and KRONE excellent StrongEdge net wraps provide excellent spread from edge to edge resulting in perfectly shaped round bales. For total peace of mind insist on Krone Netwrap.

  
**KRONE EXCELLENT  
 NETWRAP**

**FEATURES**

High tear resistance and KRONE anti laddering warranty

Excellent unrolling behaviour and guaranteed length

Easy handling when inserting net thanks to left/right markings

End marking over the last 70 metres

Optimum locking of the net ends

Great UV and weather stability

Superior reliability and easy use

Specially developed for KRONE round balers allows you to bale longer with the best top to bottom bale filling.



 **KRONE**



**FIND YOUR  
NEAREST KRONE  
DEALER TODAY**



[KRONENEWZEALAND.CO.NZ](http://KRONENEWZEALAND.CO.NZ)