

# SG25 SERIES SKID GRADERS

Available for: SSV65 | SSV75 | SVL65 | SVL75 | SVL97

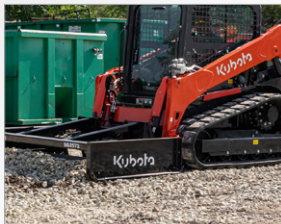
DIRTWORKING



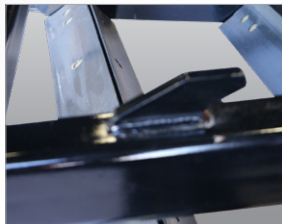
## KEY FEATURES

- Ripper teeth break compacted soils
- Bi-directional blades; Adjustable cutting angles
- Replaceable skid shoes
- Bucket carrier lugs on top

Landscapers, contractors, and developers can level construction sites, prepare seedbeds, and rejuvenate driveways forwards or backwards. Ripper teeth break compacted soils for a better finish.



Full length, heavy-duty skid shoes are reversible and replaceable.



After loading the SG25 onto a trailer, a bucket can be mounted on top using the storage lugs, to save space.

Dual height grader blades allow the grader to be adjusted to desired amount of cultivation, leveling, & grading.

	SG2572	SG2584
Working Width (m)	72" (1.83)	84" (2.13)
Overall Width (m)	81-1/4" (2.06)	93-1/4" (2.37)
Weight w/Shanks (kg)	886 lbs (401.9)	952 lbs (431.8)
Number of Straight Shanks	6	7
Skid Steer & Tractor HP Requirement (kw)	40-95 HP (29.8-70.8)	
Overall Length (m)	52-1/4" (1.33)	
Overall Height (cm)	22" (55.9)	
Side Panel Height with Skid Shoes (cm)	15-1/2" (39.4)	
Side Panel Length (m)	50" (1.27)	
Side Panel Thickness (mm)	1/4" (6) Thick with 2-3/4" (7) formed edges	
Skid Shoe Construction (mm)	3/8" (10) Thick with a formed bevel to prevent gouging	
Cutting Edges (cm)	Four 1/2" x 6" (1.3x15.2) high-carbon, heat-treated blades that are reversible and replaceable	
Cutting Edge Adjustment (cm)	Variable vertical adjustment from level grade to 1-1/2" (3.8) below grade	