

TR SERIES TRENCHERS

Available for: SSV65 | SSV75 | SVL65 | SVL75 | SVL97

DIRTWORKING



KEY FEATURES

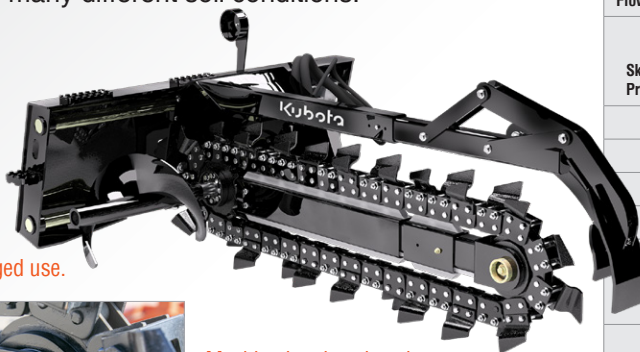
- Adjustable spoil auger
- Manual or hydraulic sideshift
- 6", 8", 10" Width chain options
- 4 teeth configurations
- Patented depth gauge

Used by rental yards, contractors, and developers to dig trenches for water, electrical, drainage, or footings in many different soil conditions.

Heavy frame construction stands up to everyday rugged use.



Machined and enclosed front bearings are protected against dirt and offer extended life.



		TR48	TR60
Weight w/2 Pitch Cup Chain & Hydraulic Side Shift (kg)		1,236 lbs (560.6)	1,300 lbs (589.7)
Overall Length (m)		90.5' (2.30)	102.5' (2.60)
Standard Boom Length (m)		65.5' (1.66)	77.5' (1.97)
Digging Depth at 60° (m)		4' (1.22 m)	5' (1.52 m)
Overall Width (m)		64" (1.63)	
Auger Diameter (cm)		15.5" (39.4)	
Side Shift Options (cm)		Side Shifts from center to 22" (55.9) right of center	
Side Shift Travel (cm)		22" (55.9")	
Trenching Widths Available (cm)		6", 8", 10" (15.2, 20.3, 25.4)	
Hydraulic Motor Flow Requirements	Low Flow (lpm)	12-24 gpm (45.4 - 90.8)	
	High Flow (lpm)	24-40 gpm (90.8 - 151.4)	
Chain Speed (Depending on Skid Steer Flow & Pressure Ratings)	Low Flow (m/min)	227-366 fpm (69-112)	
	High Flow (m/min)	221-373 fpm (67-114)	
Motor Case Drain		Standard	
Motor		Reversible	
Chain Tightener		Grease cylinder	
Crumber Shoe		Floating	
Patented Depth Indicator		Standard (Viewable from operator seat)	
Roller Guide Bearings at Boom Head		Self-contained, ball bearings with triple-lip seals & metal shroud covers	
Drive Bearings Between Motor & Drive Sprocket		Self-contained, single & double row ball bearings with extra heavy duty seals	
Chain Options - Numerous		Cup teeth on 2 or 4 pitch, scorpion w/cup teeth, or alligator w/cup teeth	
Frame Construction (mm)		Heavy-duty 5/16" (8) thick w/ 3/4" (19) reinforced bar around three sides of the bottom lock pin slots	
Trencher Chain (cm/kg)		2.00" (5.1) pitch, 50,000 lb (22,679.6) tensile strength anti-flex	